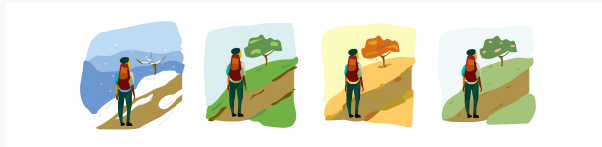


Framework

Version 10

Published 12/5/2024 by **Truc Chau** Last updated 12/19/2024 10:41 PM by **Truc Chau**



The Curriculum Integration (CI) Framework describes Seneca's approach to weaving Seneca's priority areas into curriculum: *Truth and Reconciliation (TRC)*; *Equity, Diversity and Inclusion (EDI)*; *Sustainability (SUS)*; *Human Skills*.

The curriculum integration process looks different for every faculty, course and program. Wherever you happen to be on your journey, the framework will meet you where you want to start and help you set goals for meaningful integration.

The resources on this website are grounded in all four elements of this framework to ensure a customized user experience and meaningful curriculum integration.

What

The "What" refers to the specific values, concepts and skills that you want to integrate into your course.

Why

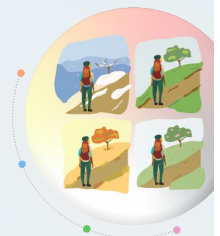
The "Why" refers to your personal and/or professional rationale for integrating values, concepts and skills into your course.

How

The "How" refers to curriculum integration strategies and teaching techniques that will help you meaningfully integrate values, concepts and skills into your course.

Where

The "Where" helps you figure out where to go next. It helps you set goals as you continue your integration journey.



[Back to top](#)