

From Grief to Growth: Honoring a Loved One with a Memorial Tree

Published 7/31/2024 by [Anitta Toma](#)

Niloufar Abbasiyan is a student in the Supply Chain Management - Global Logistics program. In this blog entry, she speaks about a unique service to honour loved ones –planting a tree in their memory.

Two months ago, unfortunately, my friend's father passed away. I was in Canada and unable to attend the funeral that was taking place back in my home country, Iran. When I was trying to figure out how to express my sympathy, my initial thought was to send flower baskets. But during my search online, I found a company that offered a unique service: ordering and planting trees as a meaningful memorial. As it turns out, several websites are providing this service. I started to realize the benefits of planting a tree over sending flowers that would only last a few days. Not to mention, flowers often end up with tools and decorations, leading to waste and environmental harm.

What I liked about the tree planting option was the variety of choices I had. I could choose a tree type and its location based on environmental conditions like temperature, humidity, soil type, and water requirements. The options included oak, pine, wild barberry, cypress, wild pear, elder, and more. In the end, I decided on a specific spot to plant the memorial tree with my friend's father's name, along with a birth certificate and a placard.

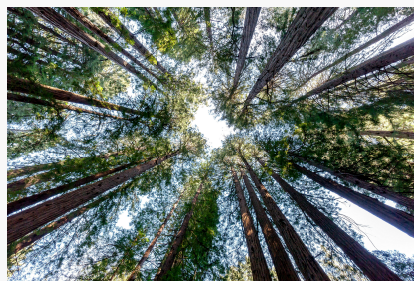


Photo by [JHVEPhoto](#)

This eco-friendly tribute is more than just a lasting memorial; it's also a contribution to the environment, creating a living legacy that will endure for years. The best part is that the tree

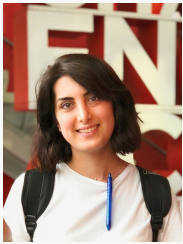
will keep growing and thriving indefinitely.

I believe if more people embraced this idea in the community, not only would it reduce waste, but it would also allow us to give a special and enduring gift to our loved ones while benefiting the environment.

Now that distances can feel overwhelming for me, finding a unique and impactful way to honor the memory of a loved one becomes crucial. Even though I couldn't be there physically, the act of planting a tree in honor of my friend's father creates a sense of connection and serves as a heartfelt.

Niloufar Abbasiyan

Supply Chain Management - Global Logistics



tags : prme, prme-blog-new